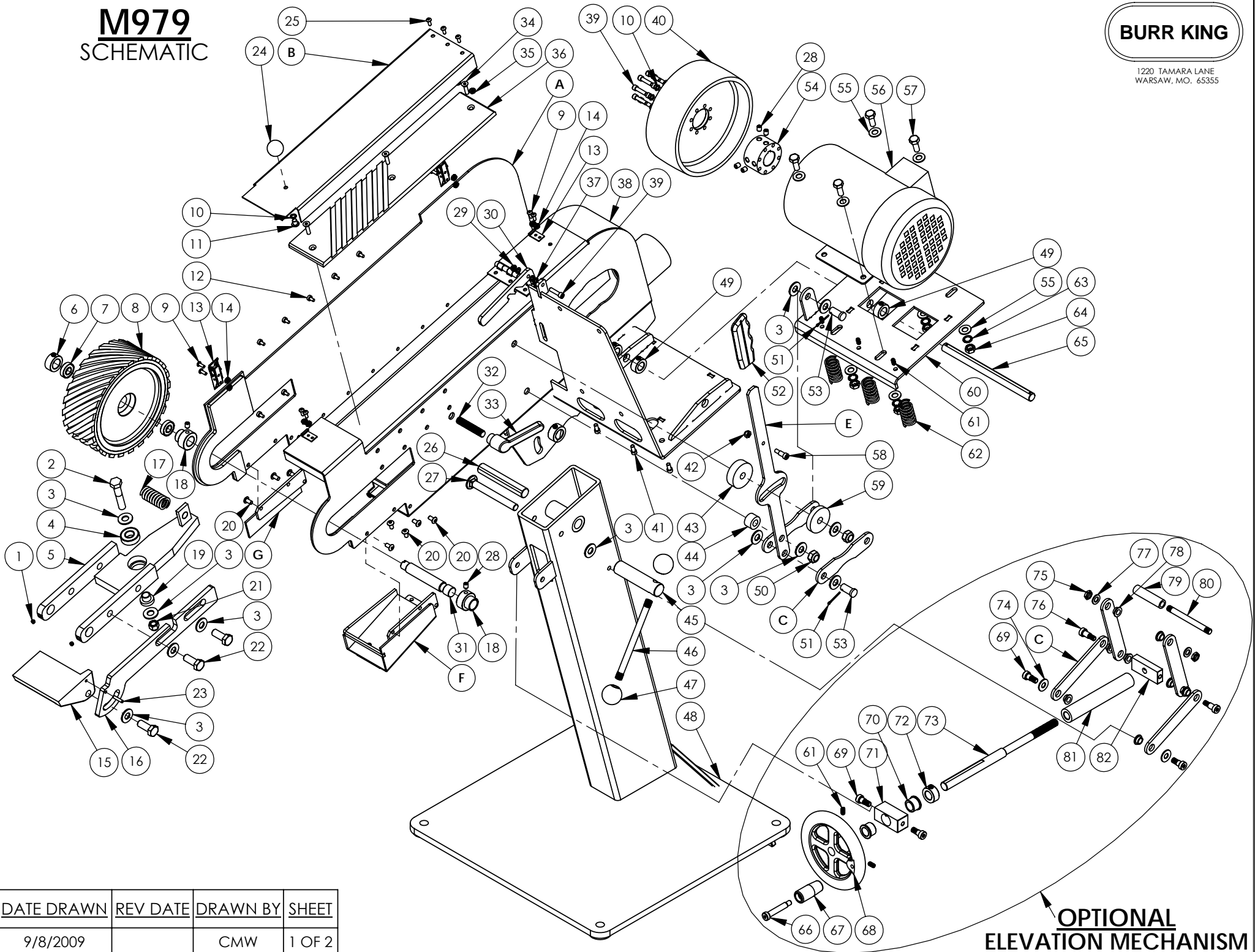


M979 SCHEMATIC

BURR KING

1220 TAMARA LANE
WARSAW, MO. 65355



**OPTIONAL
ELEVATION MECHANISM**

| DATE DRAWN | REV DATE | DRAWN BY | SHEET |
|------------|----------|----------|--------|
| 9/8/2009 | | CMW | 1 OF 2 |



1220 TAMARA LANE
WARSAW, MO. 65355

| M979 | | | |
|----------|-------------|-----------------------------------|------|
| ITEM NO. | PART NUMBER | DESCRIPTION | QTY. |
| 1 | 3-0010 | SCREW, 1/4-20 x 1/4, SET, CUP | 2 |
| 2 | 1-0031 | BOLT, 1/2-13 x 2.5, HH, GRD5 | 1 |
| 3 | 21 | WASHER, 1/2, SAE, FLAT, ZINC | 12 |
| 4 | 701B | BEARING | 1 |
| 5 | 604 | WELDMENT, CONTACT WHEEL | 1 |
| 6 | 627 | COLLAR, 3/4 x 1 1/4 x 9/16 | 1 |
| 7 | 11-0010 | BEARING | 2 |
| 8 | 9320 | CONTACT WHEEL, 8x3, FORK 90D, S | 1 |
| 9 | 24 | SCREW, 6-32 x 1/2, MACH | 8 |
| 10 | 5-0032 | WASHER, 1/4, LOCK, SPLIT | 9 |
| 11 | 2-0015 | SCREW, 5/16-24 x 3/8 BH | 1 |
| 12 | 6-0011 | RIVETS, SS, 3/16 x 1/2 | 7 |
| 13 | 623 | LATCH, DRAW | 2 |
| 14 | 23 | NUT, 6-32, KEP | 8 |
| 15 | 622 | WORKREST | 1 |
| 16 | 661 | SUPPORT, WORKREST | 1 |
| 17 | 616 | SPRING, TRACKING | 1 |
| 18 | 699 | BUSHING, ECCENTRIC | 2 |
| 19 | 638 | SPACER, NOSE | 1 |
| 20 | 2-0028 | SCREW, 1/4-28x1/2 BH | 8 |
| 21 | 41 | NUT, 1/2-13, NYLOK, ZP STD | 1 |
| 22 | 1-0028 | BOLT, 1/2-13 x 1 1/4 HH | 3 |
| 23 | 6-0001 | PIN, 3/16 X 1, ROLL | 1 |
| 24 | 660 | KNOB, 1/4-20, PLASTIC, BALL | 1 |
| 25 | 9 | SCREW, 10-24x1/2 BH | 3 |
| 26 | 606 | ROD, HEAD PIVOT | 1 |
| 27 | 1-0029 | BOLT, 1/2-13x4.5, GRD5, CARR, PL | 1 |
| 28 | 25 | SCREW, 5/16-18 X 3/8, SET, SOC | 6 |
| 29 | 4-0013 | NUT, 1/4-20, KEP | 1 |
| 30 | 634 | LATCH, TENSION RELEASE | 1 |
| 31 | 1602-3M | SHAFT, CONTACT WHEEL | 1 |
| 32 | 642 | ROD, 1/2-13 ALL THREAD, 3.5" | 1 |
| 33 | 624 | HANDLE, 1/2-13, BELT TRACKING | 1 |
| 34 | 7-0008 | SCREW, 1/4-20 x 1, FLAT HD, ALLEN | 3 |
| 35 | 14 | NUT, 10-24, KEP | 3 |
| 36 | 621 | PLATEN | 1 |
| 37 | 5 | WASHER, 960-416 AN | 3 |
| 38 | 603 | WELDMENT, MAIN HEAD | 1 |
| 39 | 30 | SCREW, 1/4-20x1 SOC CAP | 9 |
| 40 | 625 | WHEEL, DRIVE, 8 x 3 | 1 |
| 41 | 1431 | BOLT, 1/4-20 X 1/2 ALLEN, CS | 3 |
| 42 | 11B | NUT, 1/4-20, ACORN, CROWN | 1 |
| 43 | 629 | SPACER, 2OD x 1/2ID, DELRIN | 1 |
| 44 | 631 | SPACER, 1OD x 1/2ID, DELRIN | 1 |
| 45 | 2039 | SHAFT, MAIN, TABLE, CLAMP | 1 |
| 46 | 2027 | ARM, GEARBOX LOCKING | 1 |
| 47 | 2049 | KNOB, BALL, BLK, PLASTIC | 2 |
| 48 | 601 | PEDESTAL, 979 | 1 |
| 49 | 628 | COLLAR, 5/8 x 1 1/8 x 1/2 | 3 |
| 50 | 4-0001 | NUT, 1/2-13, JAM, ESNA 21, NYLOK | 2 |

| M979 | | | |
|----------|-------------|----------------------------------|------|
| ITEM NO. | PART NUMBER | DESCRIPTION | QTY. |
| 51 | 6-0005 | PIN, COTTER 1/8 x 1 | 2 |
| 52 | 636 | GRIP, HAND, 3/16 x 1 x 4 3/4 | 1 |
| 53 | 6-0010 | PIN, CLEVIS, 1/2 x 1 | 2 |
| 54 | 635 | HUB, DRIVE, 2.48OD x 1.125ID | 1 |
| 55 | 5-0023 | WASHER, 3/8 X 7/8, USS | 8 |
| 56 | MOTOR | CALL FACTORY | 1 |
| 57 | 1-0001 | BOLT, 3/8-16 x 1 HEX HEAD | 4 |
| 58 | 2-0039 | BOLT, 5/16 x 1/2 SHOULDER | 1 |
| 59 | 632 | WASHER, 2OOD x 1/2ID, DELRIN | 1 |
| 60 | 605 | WELDMENT, MOTOR MOUNT | 1 |
| 61 | 1445 | SCREW, 1/4-20 x 3/8, SET | 5 |
| 62 | 626 | SPRING, BELT TENSION | 3 |
| 63 | 5-0014 | WASHER, 3/8, LOCK, INTERNAL STAR | 4 |
| 64 | 12B | NUT, 3/8-16, HEX, FULL, GRD 5 | 4 |
| 65 | 617 | ROD, MOTOR MOUNT | 1 |

| 603 INCLUDES | | | |
|--------------|-------------|-----------------------------------|------|
| ITEM NO. | PART NUMBER | DESCRIPTION | QTY. |
| A | 603S | DOOR, SIDE, 603 GUARD | 1 |
| B | 603V | DOOR, TOP, 603 GUARD | 1 |
| C | 615 | BAR, ELEVATION, 1 x 3/16 x 7- 3/4 | 4 |
| D | 618 | LINK, FLAT, 1 x 3/16 x 8- 1/2 | 2 |
| E | 619 | HANDLE, TENSION RELEASE | 1 |
| F | 653 | MOUTH ASSEMBLY | 1 |
| G | 655 | MOUTH ASSEMBLY, DOOR | 1 |

| OPTIONAL ELEVATION MECHANISM | | | |
|------------------------------|-------------|-----------------------------------|------|
| ITEM NO. | PART NUMBER | DESCRIPTION | QTY. |
| 66 | 2-0021 | SCREW, 3/8 x 1 3/4, 5/16-18 x 1/2 | 1 |
| 67 | 2044 | HANDLE, SMALL WHEEL | 1 |
| 68 | 2013 | WHEEL, HAND, SMALL | 1 |
| 69 | 613 | BOLT, 3/8 x 5/16, SHOULDER | 4 |
| 70 | 2025 | BUSHING, OILLITE, FLANGE | 2 |
| 71 | 609-1 | BLOCK, FRONT ELEVATION | 1 |
| 72 | 628 | COLLAR, 5/8 x 1 1/8 x 1/2 | 1 |
| 73 | 607 | ROD, ELEVATION | 1 |
| 74 | 40 | WASHER, 3/8, SAE | 2 |
| 75 | 39 | NUT, 3/8-24, JAM, ESNA, NTE | 2 |
| 76 | 2-0040 | SCREW, 1/4-20 x 1 1/2, HH | 2 |
| 77 | 17 | WASHER, 960-616, AN | 2 |
| 78 | 614 | BUSHING, FLANGE | 8 |
| 79 | 602 | SPACER, ELEVATION | 1 |
| 80 | 637 | SUPPORT, ARM, ELEVATION | 1 |
| 81 | 608 | TUBE, ELEVATION | 1 |
| 82 | 610-1 | BLOCK, REAR ELEVATION | 1 |

| TITLE | DATE DRAWN | REV DATE | DRAWN BY | SHEET |
|-------|------------|----------|----------|--------|
| 979 | 9/8/2009 | | CMW | 2 OF 2 |